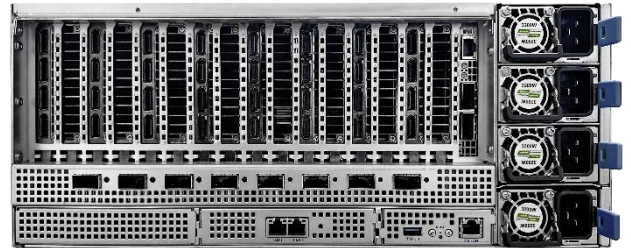


# ESC8000A-E13X

## High Performance 4U NVIDIA RTX PRO™ Server



4U



2



24

ESC8000A-E13X is NVIDIA RTX PRO™ Server powered by dual AMD EPYC™ processors, designed for enterprise and industrial AI infrastructure with exceptional computational capabilities and connectivity. Support up to eight NVIDIA RTX PRO™ 6000 Blackwell Server Edition GPUs, and offer eight 400 Gb/s QSFP ports and built-in PCIe Gen6 switch to optimize GPU-to-GPU communication bandwidth and performance for demanding AI workloads.

### Feature

- NVIDIA RTX PRO™ Server
- Extreme GPU Connectivity
- Optimized Server Configuration
- AMD EPYC 9005 Series Processors
- Toolless Design

### Target Market

- AI Factory
- Enterprise Workloads
- Agentic & Generative AI
- LLM Inference
- Industrial & Physical AI
- Digital Twins

### NVIDIA RTX PRO™ Server

Powered by the groundbreaking NVIDIA RTX PRO Blackwell GPUs and ConnectX®-8 SuperNIC Switch Board, ESC8000A-E13X delivers multifold performance boosts enterprise and industrial AI workloads with unmatched efficiency.

### Extreme GPU Connectivity

Configured with ConnectX®-8 SuperNICs and built-in PCIe switch, provides eight QSFP ports with 400 Gb/s and PCIe Gen6 connectivity for GPU-to-GPU communication.

### Optimized Server Configuration

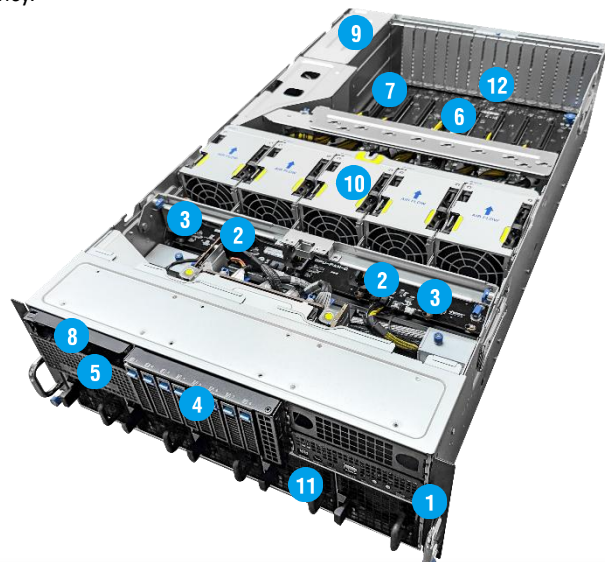
Fully compliant with NVIDIA MGX™ architecture with 2-8-5 topology (CPU-GPU-DPU/NIC), it can enable multiple configurations and rapidly deploy in large-scale enterprise or industrial AI infrastructures.

### 5th Gen AMD EPYC™ Processors

Powered by AMD EPYC 9005 series processors with up to 192 Zen 5/5c cores and support for a maximum TDP of 500 watts per socket.

### Toolless Design

The ASUS-exclusive toolless design empowers easy service and saves maintenance time for maximum efficiency.



1. Asset Tag
2. 24 x DDR5 DIMM up to 6400Mhz
3. 2 x AMD EPYC™ 9005 Series Processor
4. 8 x 2.5" Hot-swap HDD Bays
5. 2 x M.2 (Gen 5 x4 link, up to 22110)
6. 8 x PCIe slot for dual-slot GPU (Gen6 x16 link, support up 600W)
7. 1 x PCIe slot for NIC/NVIDIA BlueField®-3 DPU (Gen5, x16 link, FHHL)
8. 1 x PCIe slot for PCIe card (Gen5 x8 link, FHHL)
9. 3+1 Redundant 3200W 80 PLUS Titanium Power Supply
10. 5 x 8080 Tool-less, Hot-Swap GPU Fan Modules
11. 5 x 8080 Tool-less, Hot-Swap System Fan Modules
12. 8 x QSFP Ports

# ESC8000A-E13X

# SPECIFICATION

Processor Support		2 x Socket SP5 (LGA 6096)  AMD EPYC™ 9005 series processors* *Up to 500 TDP, actual TDP support varies by configuration
Core Logic		System on Chip (SOC)
Memory	Total Slots	24 x DIMM slots (12 channel per CPU, 12 DIMM per CPU)
	Capacity	Maximum up to 3TB
	Memory Type	DDR5 6400/5600 RDIMM *Refer to ASUS server AVL for the latest update
	Memory Size	128GB, 96GB, 64GB, 32GB, 16GB RDIMM *Refer to ASUS server AVL for the latest update
Expansion Slots	Total Slots	10
	Slot Type	Rear: - 8 x PCIe x16 (Gen6 x16 link, FHFL) for dual-slot GPU cards - 1 x PCIe x16 (Gen5 x16 link, FHHL) for NIC cards or NVIDIA BlueField®-3 DPUs Front: - 1 x PCIe x16 (Gen5 x8 link, FHHL)
Storage Bays		8 x 2.5" Front Hot-swap Storage Bays  Default SKU*: Backplane supports up to 8 x NVMe RAID SKU: Backplane supports up to 4 or 6 NVMe drives based on HBA/Raid card model installed *MGX compliance
Networking	LAN	2 x M.2 socket (Gen 5 x4 link, up to 22110)
		8 x 400 Gb/s ports (QSFP, NVIDIA ConnectX®-8 SuperNICs ) 2 x 10GbE LAN ports (RJ45, X710-AT2) 1 x Management Port (RJ45)
Multi-GPU Support		Please find the latest GPU support from <a href="https://servers.asus.com/support/gpu">https://servers.asus.com/support/gpu</a>
Graphic	VGA	Aspeed AST2600 64MB
Front I/O Ports		1 x Mini display port 2 x USB 5Gbps ports 1 x Debug port
Rear I/O Ports		8 x QSFP ports 1 x USB 5Gbps port 2 x RJ-45 LAN ports 1 x RJ-45 management LAN port
Switch/LED		Front Switch/LED: 1 x Power switch/LED, 1 x Location switch/LED, 1 x Message LED, 1 x Clear CMOS switch, 1 x Reset switch, 2 x M.2 LEDs, 2 x LAN LEDs, 1 x Q-Code/Port 80 LED Rear Switch/LED: 1 x Power switch/LED, 1 x Location switch/LED, 1 x Message LED
OS Support		Please find the latest OS support from <a href="#">OS Compatibility Guide   ASUS</a>
Management Solution	Software	ASUS Control Center Enterprise (in-band)
	Out of Band Remote Management	ASMB12-iKVM for (out-of-band/BMC AST2600)
Dimension		800mm x 439.5mm x 175 mm (4U) 31.5''x 17.3''x 6.9''
Net Weight Kg		42 kg
Gross Weight Kg		45 kg
Power Supply		3+1 Redundant 3200W 80 PLUS Titanium power Rating: 220-240 Vac, 16A (x4) 50/60Hz
Environment		Operating temperature: 10°C ~ 35°C Non-operating temperature: -40°C ~ 60°C Non-operating humidity: 20% ~ 95% (Non-condensing)  *For operating temperatures above 30°C, please contact your local sales representative